



B.C.'s Heritage Millwork Manufacturer
*Restoration * Windows * Doors * Mouldings*

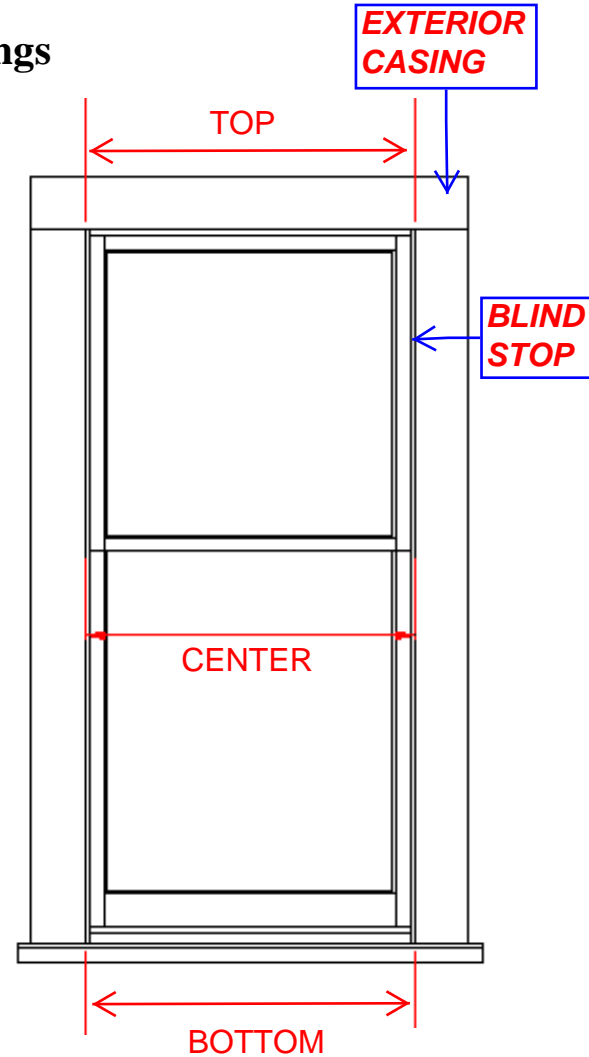
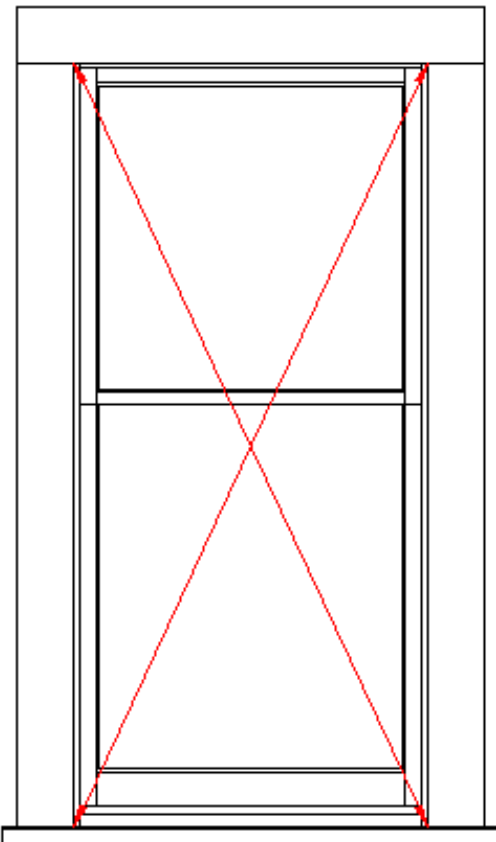
Visit our website: www.vintagewoodworks.ca

408 Alpha Terrace, Victoria, BC. V8Z 1B6 Phone (250) 386-5354 Fax 386-0161

How to measure for flush mount storm windows: For Double hung windows with exterior Casings

1. Measure width.

To measure the width for your storm and screen windows, you will take three measurements. Measure the width between the exterior window casings at the top, centre, and bottom of the window (to help determine if the window and/or casing is square. Use the **widest** of these three measurements. **Subtract 3/16"** off the width to allow 3/32" clearance on both sides.



2. Measure corner to corner

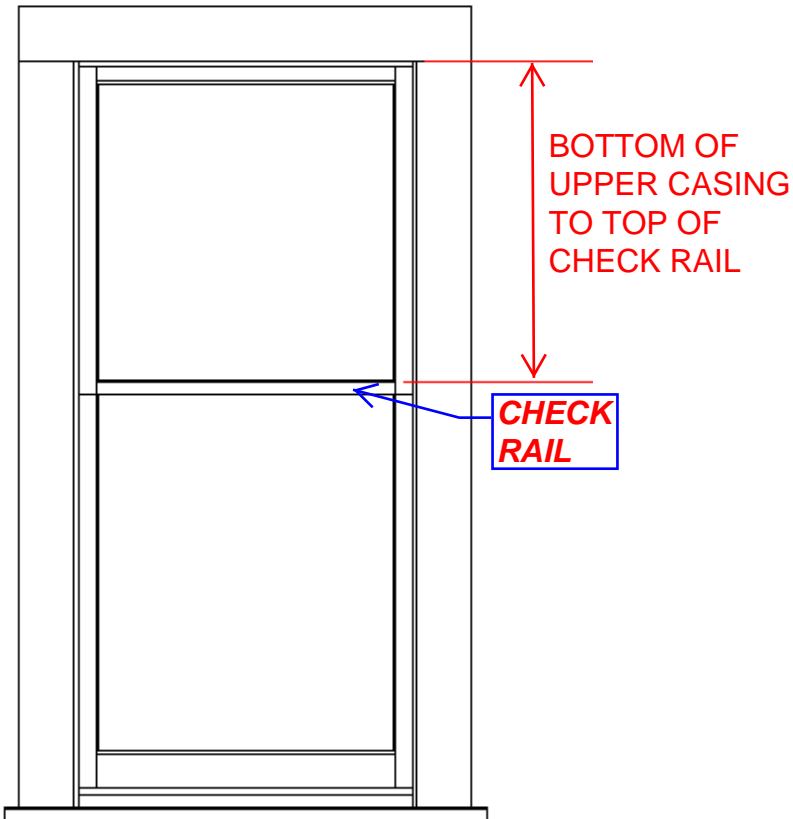
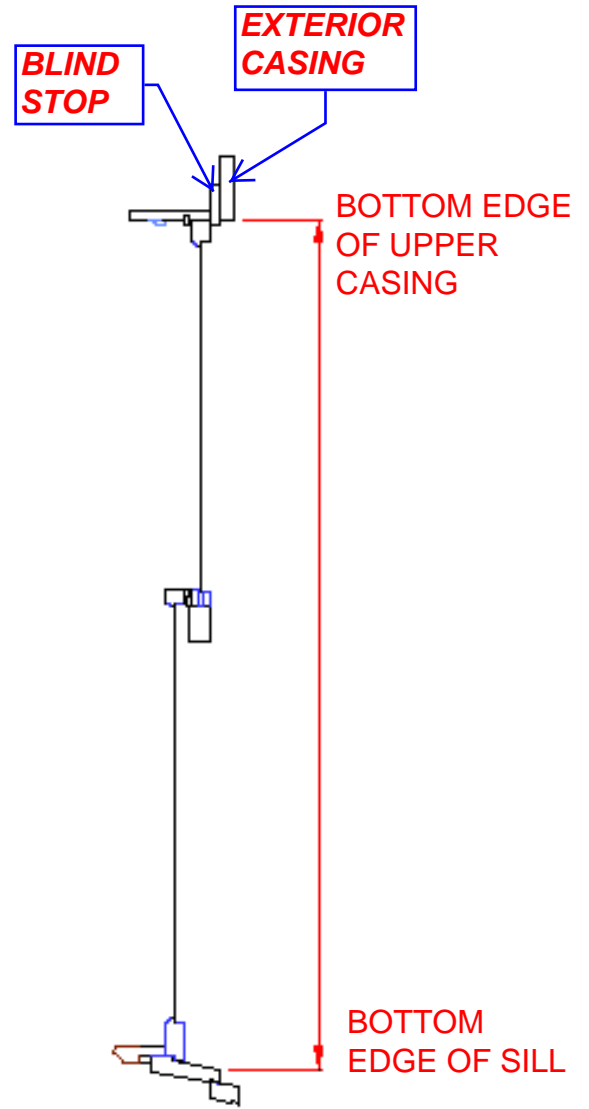
To confirm how square your window is.

***NOTE: If your windows or casings are out of square some on-site fitting may be required.**

3. **Measure height.**

To measure the height for your storm and screen windows, measure along the outside edge of casing from the sill to the bottom edge of the upper casing.

Subtract 3/16" off the height measurement to allow for 3/32" clearance on the top and bottom.

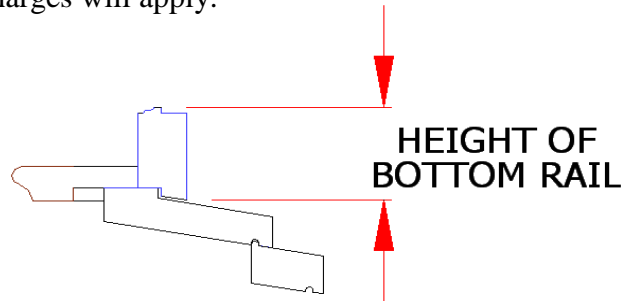


4. **Measure Check Rail.**

Measure from the bottom of the upper casing to the top of the check rail.

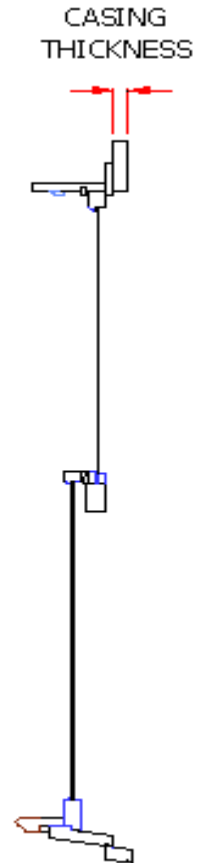
5. Height of bottom rail

The standard height of our storm and screen windows is 3 1/2" and is well suited to have a nice sight-line with most double-hung windows. Our storms and screens can be built to accommodate custom bottom rail heights, custom charges will apply.



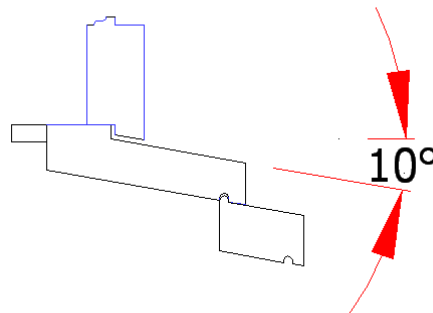
6. Measure thickness of your window casings.

Measure the thickness of the casing around your window. Window casings are typically is between 3/4" and 1". The standard thickness of our storm and screen windows is 3/4" and is well suited to fit most casings. Our storm and screen windows can be built to accommodate casings of a non-standard thickness, custom charges will apply.



7. Slope of window sill.

The slope of your exterior window sills is required to match up the bottom rail of your storms and screens to your sills. They are typically 5-12 degrees. Our storm windows come with a standard 10 degree angle, and will fit nicely over most typical sills. If your sill slope is significantly different, please note this on your measurement sheet; custom charges may apply.



8. Hardware

We offer hardware for both fixed and opening storm and screen windows. Our fixed window hardware package includes storm hangers and turn buttons. Hardware for opening storm and screen windows includes storm sash openers and hangers.